

# CRYSTAL

— SKI HOLIDAYS —

## YOUR GUIDE TO THE MOUNTAIN

*Packed full of inspiration and advice  
to help you plan your next ski trip*



WINTER 2015/16

### FIND THE ONE

Whether you're an Après Animal, Powder Hound or Mile Muncher, find the right resort for you.

### RESORT LOWDOWN

From the number of ski runs to the price of a beer - read insider tips from around the world.

# THERE ARE ONLY **TWO SEASONS** IN OUR CALENDAR - **WINTER** AND **“TOO WARM”**

Never been skiing? Here you'll find all the ways a mountain iced with fluffy snow can take your breath away.

If, like us, you're already in love, then you know about cruising untouched powder, deckchairs in the sun and making first lifts.

## THE SLOPES ARE YOUR PLAYGROUND

The freedom, the laughs, the crisp mountain air. The click of bindings and the “did you see me go?” shouts. The goggle tans, après antics and blue sky days. Taking on - and beating - your nemesis run. It's all part of the rush and excitement of a ski holiday.

**We are Crystal Ski Holidays and we love the mountain.  
Let us take you there.**

## THE ADVENTURE BEGINS

This guide will land you right where you want - in piles of snow, with all the info you need to start planning. You'll find heaps about where to go and stay, and tips on everything from chalets to childcare.

**START ON PAGE 5**

## SEAL THE DEAL ONLINE

Dip into the stacks of info in this guide then head online to make a date with the slopes. You get a peek at what we offer here but our website is the main event.

VISIT [crystalski.co.uk](http://crystalski.co.uk)

## WE LOVE A CHAT



Chatter away to a massive community of skiers and boarders on our Facebook and Twitter pages.

## POP IN TO SEE US

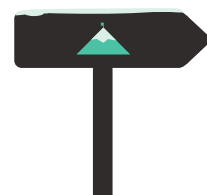


We have team members based in locations UK-wide who are on hand to chat about all your holiday needs. Swing by the indoor snow centres in Braehead, Castleford, Hemel Hempstead, Manchester, Milton Keynes and Tamworth to say hello.

## PRO-SNOW HOLIDAYS



We love our hotels green and our mountains white. We work with Travelife, The Travel Foundation and the Carbon Neutral Company to reduce our carbon footprint.





# WHAT'S INSIDE

Crystal at your service .....5  
 Choosing the right resort .....6  
 Where to stay .....10  
 Skiing with family .....16

<b>ANDORRA</b>	<b>92</b>	<b>BULGARIA</b>	<b>190</b>	Valloire	75
Arinsal	94	Bansko	196	Valmorel	web
La Massana	93	Borovets	192	Vars	web
Pas de la Casa	100	Pamporovo	198	<b>GERMANY</b>	<b>182</b>
Soldeu & El Tarter	96			Ruhpolding	183
<b>AUSTRIA</b>	<b>134</b>	<b>CANADA</b>	<b>212</b>	<b>ITALY</b>	<b>102</b>
Alpbach	web	Banff & Lake Louise	220	Arabba	117
Axamer Lizum	web	Fernie	218	Bardonecchia	112
Bad Gastein	181	Jasper	219	Cervinia	128
Bad Hofgastein	181	Panorama	224	Champoluc	web
Ellmau	162	Tremblant	225	Claviere	108
Fieberbrunn	web	Whistler	214	Corvara & Colfosco	113
Finkenberg	web	<b>FINLAND</b>	<b>200</b>	Courmayeur	web
Fulpmes	web	Iso-Syöte	201	Folgarida	web
Galtür	140	Pyhä	web	Gressoney	127
Gastein Valley	181	Ruka	202	Kronplatz - San Vigilio	121
Hinterglemm	170	Salla	206	La Thuile	132
Hochgurgl	136	<b>FRANCE</b>	<b>20</b>	Livigno	web
Hopfgarten	web	Alpe d'Huez	66	Madonna di Campiglio	122
Igls	web	Auris en Oisans	web	Ortisei	web
Ischgl	140	Avoriaz	28	Passo Tonale	124
Kaprun	178	Brides-les-Bains	web	Pila	131
Kirchberg	web	Chamonix	32	Sansicario	web
Kirchdorf	web	Chamrousse	70	Sauze d'Oulx	104
Kitzbühel	164	Châtel	26	Selva	118
Kühtai	web	Courchevel	56	Sestriere	110
Lech	143	Flaine	34	Val di Fassa	114
Maria Alm	web	La Clusaz	37	<b>NORWAY</b>	<b>207</b>
Mayrhofen	150	La Plagne	46	Beitostolen	211
Nauders	web	La Rosiere	54	Geilo	208
Neustift	web	La Tania	60	Hemsedal	210
Niederau	154	Les Arcs	50	<b>SLOVENIA</b>	<b>184</b>
Obergurgl	136	Les Carroz	web	Bled	185
Obertauern	web	Les Deux Alpes	72	Bohinj	185
Rauris	180	Les Gets	24	Kranjska Gora	186
Saalbach	170	Les Menuires	61	<b>SWITZERLAND</b>	<b>80</b>
Scheffau	163	Les Orres	web	Engelberg	82
Schladming	web	Meribel & Mottaret	58	Grindelwald	86
Seefeld	148	Montgenevre	78	Saas Fee	90
Sölden	web	Morzine	22	Wengen	84
Söll	158	Samoëns	web	Zermatt	88
St Anton	144	Serre Chevalier	76	<b>USA</b>	<b>212</b>
St Johann	168	Sainte Foy	41	Aspen Snowmass	web
St Wolfgang	web	St Martin de Belleville	web	Breckenridge	226
Westendorf	web	Tignes	42	Park City	web
Zell am See	174	Val Cenis	web	Steamboat	web
Zell Am Ziller	web	Val d'Isère	38	Vail	228
Zürs	143	Val Thorens	62	Winter Park	229

Terms and conditions ..... 230  
 Important information ..... 232



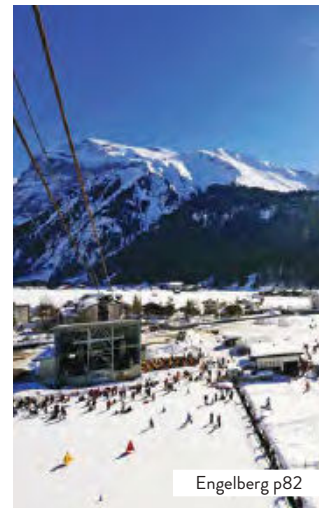
Arabba p117



Chatel p26



Corvara p113



Engelberg p82



Sainte Foy p41



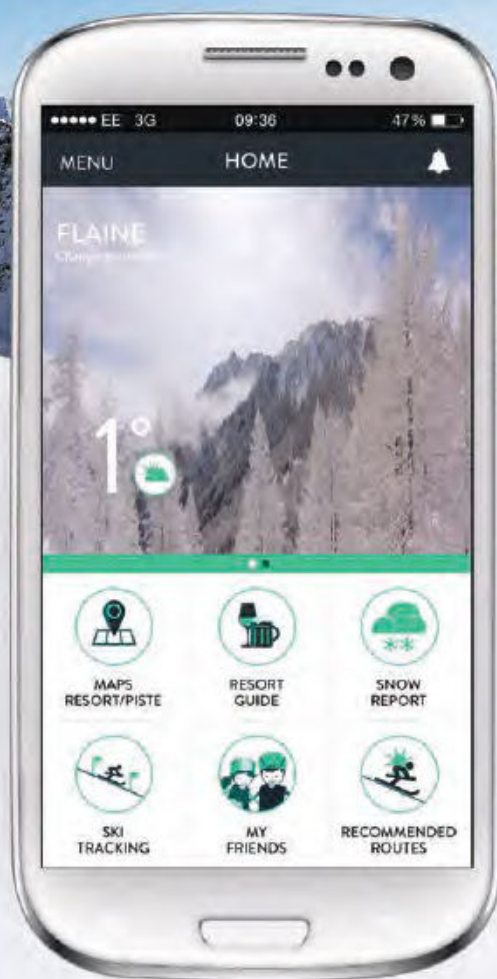
Crystal Ski Holidays is a trading division of TUI UK Limited. Company Number 2830117. Registered Office: TUI Travel House, Crawley Business Quarter, Fleming Way, Crawley, West Sussex, RH10 9QL. The air holidays and flights in this brochure are ATOL protected by the Civil Aviation Authority. This means you can book with Crystal with the total confidence that not only will you find the right holiday, but that your money is safe too. ATOL is the government-backed holiday protection scheme. So if the unexpected happens, you won't be left stranded or out of pocket. Our ATOL number is 2524. Members of the Association of British Travel Agents, No. V5126.

Crystal Ski Holidays' 2015/16 prices valid from 9 July 2015 but see our obligations on page 230.

Main cover image: La Clusaz



# PUT THE MOUNTAIN IN YOUR POCKET



Thousands of skiers and boarders have already downloaded the free Crystal Ski Explorer App - it's available on iPhone and Android.

- > Everything you need to know about your resort is right at your fingertips.
- > Find your friends on the mountain to meet up for a sneaky hot chocolate.
- > Discover our recommended routes on an interactive piste map.
- > Track how far, high and fast you're skiing - then balance it out with a fondue feast.
- > Get the latest snow and weather conditions - the 'extra fleece' dilemma will be no more.
- > Notifications from our in-resort teams to keep your finger on the pulse of what's going on.

From a guide to your first 24 hours, to info on where you'll be staying and what you can get up to - it's all there. You can even take a sneak preview at which resort you might like to try next.

THE FUN STARTS NOW





# CRYSTAL AT YOUR SERVICE

MUCH MORE THAN JUST A RIDE TO RESORT



## YOUR REP, REPORTING FOR DUTY

Our teams in resort live and breathe mountain life and know the resorts better than anyone. 24/7, one of them will either be in resort or just a call away to give you a helping hand.

Whether you have a question about the resort, ski area, or activities and après - they have the answer. Kitted out with iPads, a mountain of information is just a tap and a swipe away.

The fun starts here - get the Crystal experience at [crystalski.co.uk](https://crystalski.co.uk)

Right from the start, we give you the support you need throughout your stay - it's what we do.

After booking, log into Your Account - an online feature for Crystal customers that has the inside scoop on your trip.

Before you head to the mountain, we'll be in touch to make sure everything about your holiday is good to go. If you've booked Crystal Childcare, we'll have a chat about any little extras that need taking care of - like getting to grips with routines and eating habits.

Lift passes are your ticket to the slopes - skip the queues and get them on arrival when you book with us. Or, if you order them on the coach transfer, they'll be with you before first lifts for day one on the hill.



# MEET YOUR MATCH

CHOOSING THE RIGHT RESORT  
FOR YOU



BIG SKI AREA



NON-SKIING ACTIVITIES







## SNOWSURE SKIING

If you're all about the skiing then you're going to be looking for places that have the most consistent and near-guaranteed snow - particularly at the beginning and end of the season. High altitude resorts, like **OBERGURGL** in Austria, **TIGNES** in France, or **CERVINIA** in Italy are ideal as their upper slopes are above 2,500m. The colder temperatures up there mean that the snow is maintained for longer, while they also get a bit more snowfall in general. Another place that gets bucket-loads of the white stuff is **BANFF** in Canada - it consistently gets over 9 metres every year.

Or you could head somewhere with a glacier, like **VAL THORENS** in France. There's no better way to maintain snow than when it's on one of the world's biggest ice cubes.

## NON-SKIING ACTIVITIES

You might be keen to try out a variety of winter activities, or maybe you're part of a family or group that includes non-skiers. Either way these resorts are perfect if you don't want to spend all week carving up the piste. **RUKA** in Finland really is a winter wonderland and there's a ton of activities to try out there - snowmobiling, ice fishing and reindeer safaris are just some of the things you can do. You can even take the kids to meet Santa.

**WHISTLER** in Canada is another top pick. There's superfly zipline, head-first solo skeleton, bobsledding and bungee jumping to name but a few. A little closer to home is **WENGEN** in Switzerland where you can go curling, tobogganing, paragliding and bowling.

**OTHER RESORTS WORTH CHECKING OUT:** **KITZBÜHEL** in Austria, and **TIGNES** in France.

## BIG SKI AREA

When it comes to kilometres, these kids conquer all. If you never want to ski the same piste twice then these are the places you should check out. First up is the **DOLOMITI SUPERSKI** in Italy with a whopping 1,200km of runs to run yourself ragged.

Secondly have a look at the **THREE VALLEYS** in France. Hop over the Channel to the French Alps for it's 600km of piste, including resorts like **COURCHEVEL** and **MERIBEL**.

They're the big guns but you can also get loads of piste at the **ZILLER VALLEY** in Austria, **PARADISKI** in France, and **WHISTLER** in Canada.

## ADVANCED & OFF PISTE



## ADVANCED & OFF PISTE

Reds, blacks, bumps and steep. If you conquer a resort like **ZERMATT**, **BRECKENRIDGE** or **ST ANTON**, then you've skied some of the most challenging runs around. The Trifti in **ZERMATT** is one of the longest and most difficult slopes in Europe, while **BRECKENRIDGE** has a couple of runs called Psychopath and Boneyard - which should give you an idea of the challenge that awaits.

**OTHER RESORTS WORTH CHECKING OUT:** **GRESSONEY** in Italy, **WHISTLER** in Canada, and **LES DEUX ALPES** in France.





AUTHENTIC EXPERIENCES



## APRÈS SKI & NIGHTLIFE

For some, there's no ski without après. **ST ANTON** in Austria has a pretty solid reputation for dishing out drinks, disco and indulgence. Our favourite place is the MooserWirt where the table service trounces all - you never queue at the bar and you're never without a drink.

**PAS DE LA CASA** is another firm favourite with us Brits. The drinks in Andorra are pretty cheap, and generally you'll find a younger crowd there soaking up the nightlife. The village centre has more places to grab a drink than you can get through in a week, so it should definitely be up there if you want an evening as busy as your day on the slopes.

**OTHER RESORTS WORTH CHECKING OUT:** **VAL D'ISÈRE** in France, **LIVIGNO** in Italy, and **BOROVETS** in Bulgaria.

## AUTHENTIC EXPERIENCES

You can't go wrong with the larger, purpose-built ski resorts, but sometimes what you need is some old school charm and a hefty waft of timber. For authentic mountain experiences try **SALLA** - the birthplace of Finnish skiing. It's rural, surrounded by trees, plus it's full of traditional Lappish cuisine, along with some international favourites.

**LA CLUSAZ** is in France and if it had a middle name it would be charm. The place is packed full of character, has loads of boutique shops and is simply one of the prettiest resorts in France - definitely worth a look.

**SELVA VAL GARDENA** is in Italy, but it was once part of Austria. As a result you get a fascinating mix of both countries, plus it's in the **DOLOMITES** which is a UNESCO world heritage site. The après is pretty decent too so you get tradition along with a bit of a party kick to it.

**OTHER RESORTS WORTH CHECKING OUT:** **BRECKENRIDGE** in the USA, and **GEILO** in Norway.

## BEGINNERS

A good beginner resort has excellent tuition and lots of blue or green runs to build your confidence.

Learn how to do things the right way and by the end of the week you'll be styling it down the easier slopes.

**PAMPOROVO** in Bulgaria is a great place to find out if you've got the snowsports bug - it's a really cheap place to go to, the tuition is very much geared towards newcomers, and the majority of its runs suit beginners well.

**ALPE D'HUEZ** in France is another option. It has a large ski area known for its wide green and blue runs, plus if you're with a mixed-ability group, there's an equally impressive range of more advanced slopes.

Go online to have a look at our first-time packages too where you'll get lessons included as well as lift passes and equipment hire - exactly what you need if it's your first go on the slopes.

Go to [crystalski.co.uk/beginners](http://crystalski.co.uk/beginners)

**OTHER RESORTS WORTH CHECKING OUT:** **NIEDERAU** in Austria, **BARDONECCHIA** in Italy and **BEITOSTOLEN** in Norway.



## BEGINNERS



## INTERMEDIATES



## INTERMEDIATES

Once you've found your ski legs you'll want to move on to the cruisy blues and reds. Somewhere like **LA PLAGNE** in France has excellent English-speaking instructors, but it's the thrilling wide runs that make it one of the best places to go as an intermediate.

Head to **OBBERGURGL** in Austria for uncrowded, long runs that all finish up back in the traditional - and really quite charming - village.

Also have a look at **SELVA VAL GARDENA** or **MADONNA DI CAMPIGLIO** in Italy, or **GEILO** in Norway.

Last but not least check out our improver packages and bundles that get you the lessons and equipment you need to really start mastering the mountain.

Go to [crystalski.co.uk/improvers](https://crystalski.co.uk/improvers)

## TIGHT BUDGET



## TIGHT BUDGET

There are three countries in particular that stand out if you're looking for a great value ski holiday - Slovenia, Bulgaria and Andorra. Food and drink are all really cheap, and the accommodation is good value without compromising on quality. The respective resorts we recommend are **KRANJSKA GORA**, **BANSKO** and **ARINSAL**. If you'd like a more traditional ski destination then have a look at **LA THUILE** in Italy - where the pizzas and Peroni are 10-a-penny (ish) - or **BRIDES LES BAINS** in France.

Sometimes booking a holiday means creating an Excel spreadsheet to keep an eye on the wallet strings. For some this is a source of joy and for others it's a necessary evil. Anyway, here's some ways to make a ski holiday really easy and affordable.

## SKI PLUS

**Ski Plus is the easiest way to hit the slopes.**

You'll get a lift pass and equipment hire, along with flights, transfers and accommodation - all for one price. Just add boots if you need them and you've got everything you need for the mountain. It's all sorted in advance and you'll save money in the process.

Go to [crystalski.co.uk/ski-packages](https://crystalski.co.uk/ski-packages) to see the full selection.

## HOTEL CREDIT

You can also check out hotel credit, where you get money to spend at your hotel bar. Go to [crystalski.co.uk/ski-deals](https://crystalski.co.uk/ski-deals) and use the filters on the right to choose hotel credit.



# WHERE TO STAY

ALL YOU NEED TO KNOW ABOUT **ACCOMMODATION**



Hotel Greif, Corvara



## CRYSTAL'S ACCOMMODATION RATINGS

Our accommodations are ranked by their general character, location and customer feedback. Keep an eye out for the number of little snowflakes - how fitting - next to their names to get a feel for how they compare.



Hotel Le Samovar, Val d'Isère



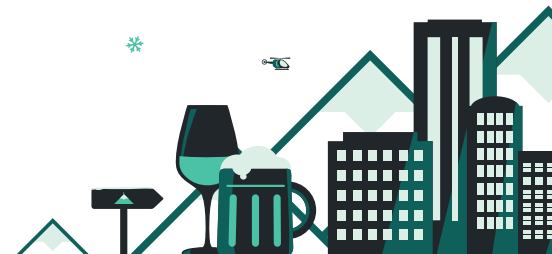
Hotel Jägerwirt, Kitzbühel

## HOTEL LIFE WE WANT IT ALL AND WE WANT IT NOW

On top of perks like pools and bars, in the hotels we've selected for you, a team of staff are ready to make sure you have all you need - you can simply relax and ski.

From basic places for those on a budget, to the more exclusive and elegant pads for folks who fancy splashing the cash - our hotels come in all shapes and sizes. Full board, half board or bed and breakfast, the choice is yours.

Plus, hotels in Austria and Italy are often family run, great if you're looking for local hospitality and authenticity, and you won't get a warmer welcome anywhere else.







Sun Valley Apartments, La Plagne



Fraser Crossing Apartments, Winter Park



Les Chalets du Jardin Alpin, Val d'Isère



tripadvisor®

You'll find TripAdvisor reviews on

[crystalski.co.uk](https://crystalski.co.uk)

## SELF-CATERING APARTMENTS

Whether it's munching breakfast or taking a well deserved nap, in a self catering apartment you can do what you want, when you want. Have dinner in your PJs if you like, we're not judging.

This aspect is fab for families, you can keep your little one's routine going and they'll have their own space to play to their heart's content.

Plus, these are generally purpose built - and their purpose is to get you on the hill - so are often ski to door. They're also great value - we hear more spending money jingling.







## CHALETs GREAT FOR A COMFORTABLE, LAID-BACK EXPERIENCE

As well as being cosy and welcoming – chalets are just really good fun. For the chatterboxes among you, they're social places with living rooms and communal dining areas. There tends to be board games and cards too for both kids and big-kids alike.

Log in to the chalet WiFi and you can keep those back at home updated with – and of course make them jealous of – your best snaps of the day.







Chalet Marmottes, Serre Chevalier



Forest Chalet, Geilo



With your new found chalet ski buddies, share your wipe out stories or get out on the mountain together – it's up to you. Or if you're travelling with friends, why not take a chalet exclusively, just for your group?

Plus, ski trips just aren't for peeling potatoes or washing dishes. You'll get home cooking on the table at the end of a day on the hill – now that's what a chalet holiday's all about.

Go online to check out our chalets in [AUSTRIA](#), [FRANCE](#), [ITALY](#) and [NORWAY](#), you'll find loads of images plus floor plans to help you get your bearings. Check out intimate 6-bed chalets like [CHALET EMILE, TIGNES](#), through to the [MOUNTY, SÖLL](#) that sleeps up to 45.







# *Our finest*

**Great for luxury accommodation, amazing food and impeccable service.**

Along with luxurious accommodation you'll get more indulgent food and wines throughout your stay, plus, from selected airports, complimentary executive lounge access, greater luggage allowance with Thomson Airways and of course our quality Crystal service.

***Look out for our finest places to stay.***





Hotel Alpen-Karawanserai, Hintertglemm



L'Amara Apartments, Avoriaz



Hotel Hochfirst, Obergurgl

**OUR FAVOURITES INCLUDE:**



**LES ARCS, FRANCE**  
Arc 1950 Le Village Apartments | 4.5\*  
SEE PAGE 53



**ST ANTON, AUSTRIA**  
Chalet Tirolerhaus | 4\*  
SEE PAGE 146



**WHISTLER, CANADA**  
Fairmont Chateau Whistler | 5\*  
SEE PAGE 216





# SKIING WITH FAMILY

TURN PLANNING A HOLIDAY  
INTO CHILD'S PLAY

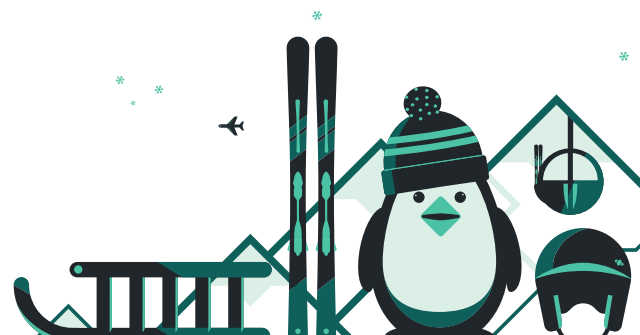


We'll let you in on how we choose resorts and places to stay that are good for families, so you'll know what to take into account when looking for yourself.

Take a peek at our new Family Guide to the Mountain, packed with info and top tips to help you mobilise your troops - [guide.crystalski.co.uk/family-guide-to-the-mountain](https://guide.crystalski.co.uk/family-guide-to-the-mountain).

You can also search for holidays on [crystalski.co.uk](https://crystalski.co.uk), then use the Family Resort and Best for Families filter options to find family-friendly holidays.

Or give one of our in-the-know team members a call to chat through your options.





## FINDING THE RIGHT ONE

### GOOD THINGS COME IN SMALL PACKAGES

Consider going for smaller resorts and ski areas - you're unlikely to ski endless stretches of piste as younger kids tire quickly. Plus, it'll be easier to keep track of more independent, older kids.

### THE CLOSER THE BETTER

Make sure the places you'll need to get to on holiday are all within a snowball's throw of one another. Childcare, ski school, lifts and accommodation are good things to keep in mind.

### LET US ENTERTAIN YOU

Look for places with fun things to do off the slopes - bowling, swimming and ice skating are all great, as are snow-based activities like dog sledding and tobogganing.

### WINTER WONDERLAND

For a ski holiday with a magical afterglow, go for a resort with a winter wonderland. You can ski among snow-dusted Christmas trees and relax in wooden chalets.

### ON THE ROAD

Look out for resorts with a transfer under 2 hours to spend more time actually in the snow than just dreaming about it. Plus you'll avoid repeated shouts of "Are we there yet?"

### CRYSTAL CHILDCARE

Your kids will have loads of fun in the safe hands of our fully trained childcare team. We look after babies from as young as six months old up to kids aged 11 years. Our childcare clubs are available within a selection of hotels in ALPE D'HUEZ, LA PLAGNE, TIGNES, CLAVIERE, VAL DI FASSA, NIEDERAU (up to 4yrs) and KRANJSKA GORA.

We've also selected the best locally provided hotel-run kids' clubs to give you even more choice.

Look out for the Pepi Penguin icon on the resort pages or take a look at [crystalski.co.uk/families](https://crystalski.co.uk/families).



## SKI SCHOOL

### WHERE EVERYDAY'S A SNOW DAY

You won't find a safer or better place for kids to learn skiing than ski school - it has specialist, qualified instructors who teach with younger skiers in mind.

The snow-loving instructors take time to learn your child's needs, as well as make the lessons friendly and fun. The youngest skiers are taught in an enclosure at the bottom of the nursery slopes where they'll play in the snow, shuffle about and get used to their skis and boots. To top things off, confidence-boosting prizes and certificates are handed out at the end of the week.

Children's ski school is most popular during school holidays and that's when the broadest selection of children's classes are available across all resorts. So, book early to lock down your kid's place in the most fun school in town.

## CHOOSING A PLACE TO STAY

- 1 Stay somewhere that lets you ski to and from your doorstep, or that's at least very close to the slopes.
- 2 Accommodation with family-friendly features - like larger rooms and swimming pools - can be a holiday game-changer.
- 3 Staying in a hotel with Crystal Childcare can make a molehill out of a mountain. It's only available in a selection of hotels so choose wisely.
- 4 Different types of accommodation offer different holiday experiences. So check out chalets, hotels and apartments to see which is right for you.



## YOUR FAMILY GUIDE TO THE MOUNTAIN

Everything you need to know to take on the mountain together

If the thought of family time away on the mountain warms your heart and gives you itchy feet, our digital guide is the answer. It tells you about childcare, ski school and all the essentials of a family ski holiday. Check it out online at [guide.crystalski.co.uk/family-guide-to-the-mountain](https://guide.crystalski.co.uk/family-guide-to-the-mountain) from mobile and desktop devices.



# SNOW + ROCK

THE UK'S LEADING  
WINTER SPORTS SPECIALIST

---

INSPIRING  
YOUR ADVENTURE

---



OVER **25 STORES** NATIONWIDE | SHOP ONLINE AT: [WWW.SNOWANDROCK.COM](http://WWW.SNOWANDROCK.COM)



# CRYSTAL ADAPTIVE

SKI HOLIDAYS FOR INDEPENDENT,  
DISABLED PEOPLE



## BOOKING A HOLIDAY WITH US IS EASY - AND THAT GOES FOR EVERYONE

As an independent, disabled skier you'll want knowledgeable recommendations and a bit of extra support, but other than that you just want to hit the slopes and have fun with your family and friends. Crystal Adaptive makes that happen.

With Crystal Adaptive you can be sure that your accommodation is accessible, plus we can arrange equipment hire, lessons and assistance from qualified adaptive instructors.

Our dedicated adaptive team are available on the phone or via email, plus we've got reps in-resort who you can speak to 24/7 while you're away.

Go to [crystalski.co.uk/adaptive](https://crystalski.co.uk/adaptive)

email [adaptive@crystalski.co.uk](mailto:adaptive@crystalski.co.uk)

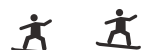
or call **020 8939 0463** for full information

### WE WORK CLOSELY WITH DISABILITY SNOWSPORT UK (DSUK)

They're an inspirational charity who make skiing accessible for everyone. Throughout the year we constantly bake cakes, raffle prizes and ridicule ourselves in fancy dress - all in the name of DSUK.

We also ask for donations when you book a holiday with us, and it's this generosity that has raised money for much-needed adaptive lessons, volunteers, specialist equipment and loads more.

To learn more about the incredible things this charity is doing, and how to get involved, visit [crystalski.co.uk/DSUK](https://crystalski.co.uk/DSUK)



# FRANCE

1



La Stash, Avoriaz

## HIGHLIGHTS

### 1 Freestyle fun at 'La Stash'

A snowpark built out of 100% natural materials in [Avoriaz](#) designed by the legendary Jake Burton.

### 2 Refuel at La Folie Douce

The famous après hangout in [Val d'Isère](#), [Meribel](#), [Val Thorens](#), and [Alpe d'Huez](#) - table dancing is recommended.

### 3 Activities in Paradiski

You can feel the rhythm, feel the rhyme and try some exciting Bobsleigh time in [La Plagne](#).

### 4 The world's highest zipwire

Take a leap of faith from the top of the world's highest ski resort in [Val Thorens](#).

3



Bobsleigh, La Plagne

### 5 Brave Europe's longest black

Carve your way down all 16km of La Sarenne at [Alpe d'Huez](#).

## THE BEST BITS

- The major resorts have big ski areas keeping all abilities entertained time and again
- You can find high-altitude skiing across the country and some of the best glaciers in the world
- Unmatched diversity of skiing - from the convenience of purpose-built resorts, to the charm of smaller traditional ski villages.

## THINGS TO CONSIDER

- Some transfers can be longer than other European destinations.
- Mountain restaurants can be expensive.

2



La Folie Douce

4



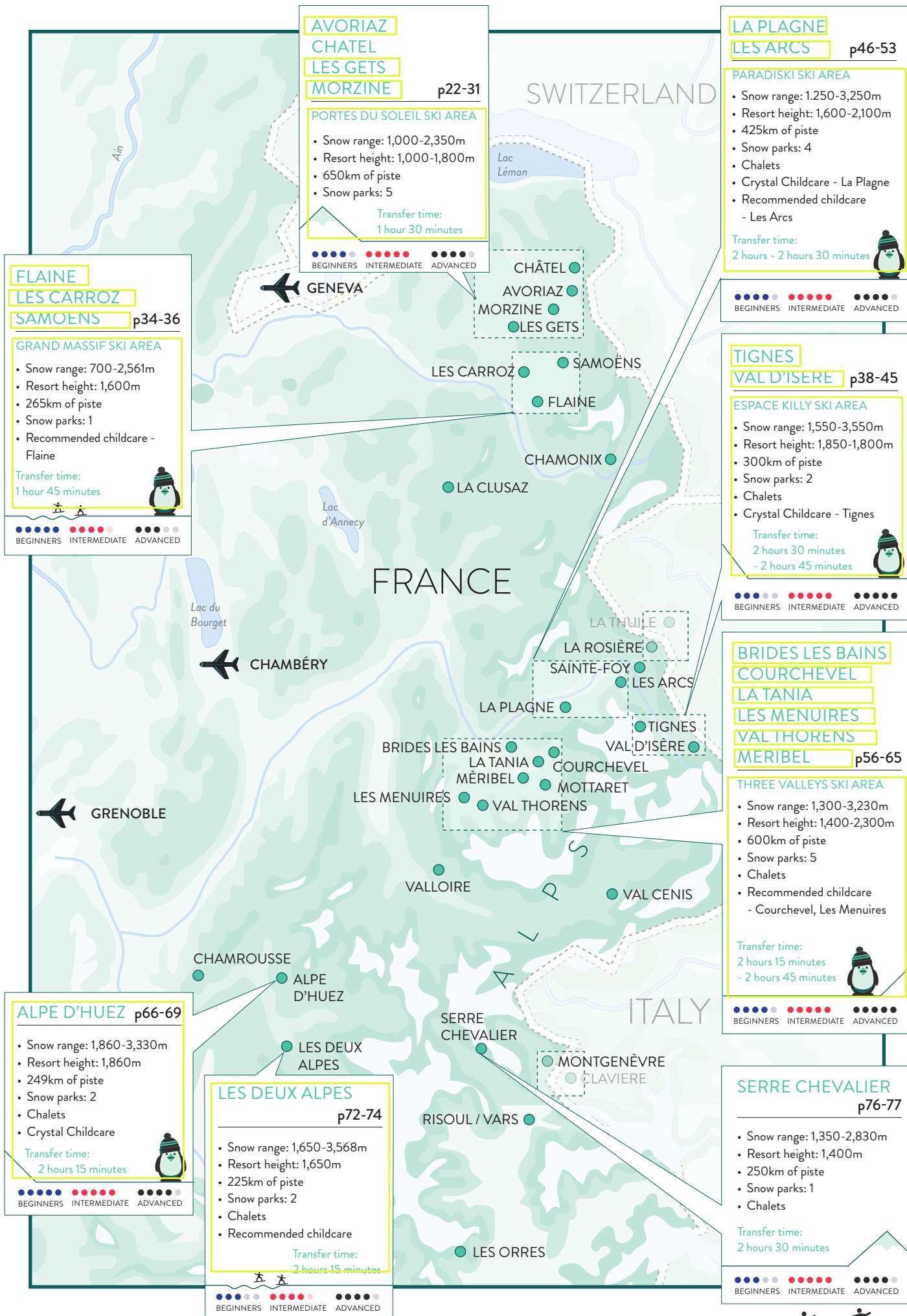
Zipwire, Val Thorens

5



Alpe d'Huez





**AVORIAZ**  
**CHATEL**  
**LES GETS**  
**MORZINE** p22-31

**PORTES DU SOLEIL SKI AREA**

- Snow range: 1,000-2,350m
- Resort height: 1,000-1,800m
- 650km of piste
- Snow parks: 5

Transfer time:  
1 hour 30 minutes

BEGINNERS INTERMEDIATE ADVANCED

**LA PLAGNE**  
**LES ARCS** p46-53

**PARADISKI SKI AREA**

- Snow range: 1,250-3,250m
- Resort height: 1,600-2,100m
- 425km of piste
- Snow parks: 4
- Chalets
- Crystal Childcare - La Plagne
- Recommended childcare - Les Arcs

Transfer time:  
2 hours - 2 hours 30 minutes

BEGINNERS INTERMEDIATE ADVANCED

**FLAINE**  
**LES CARROZ**  
**SAMOENS** p34-36

**GRAND MASSIF SKI AREA**

- Snow range: 700-2,561m
- Resort height: 1,600m
- 265km of piste
- Snow parks: 1
- Recommended childcare - Flaine

Transfer time:  
1 hour 45 minutes

BEGINNERS INTERMEDIATE ADVANCED

**TIGNES**  
**VAL D'ISERE** p38-45

**ESPACE KILLY SKI AREA**

- Snow range: 1,550-3,550m
- Resort height: 1,850-1,800m
- 300km of piste
- Snow parks: 2
- Chalets
- Crystal Childcare - Tignes

Transfer time:  
2 hours 30 minutes  
- 2 hours 45 minutes

BEGINNERS INTERMEDIATE ADVANCED

**BRIDES LES BAINS**  
**COURCHEVEL**  
**LA TANIA**  
**LES MENUIRES**  
**VAL THORENS**  
**MERIBEL** p56-65

**THREE VALLEYS SKI AREA**

- Snow range: 1,300-3,230m
- Resort height: 1,400-2,300m
- 600km of piste
- Snow parks: 5
- Chalets
- Recommended childcare - Courchevel, Les Menuires

Transfer time:  
2 hours 15 minutes  
- 2 hours 45 minutes

BEGINNERS INTERMEDIATE ADVANCED

**ALPE D'HUEZ** p66-69

- Snow range: 1,860-3,330m
- Resort height: 1,860m
- 249km of piste
- Snow parks: 2
- Chalets
- Crystal Childcare

Transfer time:  
2 hours 15 minutes

BEGINNERS INTERMEDIATE ADVANCED

**LES DEUX ALPES** p72-74

- Snow range: 1,650-3,568m
- Resort height: 1,650m
- 225km of piste
- Snow parks: 2
- Chalets
- Recommended childcare

Transfer time:  
2 hours 15 minutes

BEGINNERS INTERMEDIATE ADVANCED

**SERRE CHEVALIER** p76-77

- Snow range: 1,350-2,830m
- Resort height: 1,400m
- 250km of piste
- Snow parks: 1
- Chalets

Transfer time:  
2 hours 30 minutes

BEGINNERS INTERMEDIATE ADVANCED



## SKI RATINGS

●●●●●  
BEGINNERS

●●●●●  
INTERMEDIATES

●●●●●  
ADVANCED

●●●●●  
SNOWBOARDING

LIFT PASSES  
FROM £206



## LES ARCS

"A modern resort filled with wide, long, tree-lined descents and inspiring skiing"

Renowned for everything from wooded beginner runs to high-altitude skiing, variety is behind the enduring popularity of Les Arcs. Linked with La Plagne to create the Paradiski area, there are 425km of piste for all abilities. With 70% of the skiing over 2000m, snow conditions are reliable throughout the season. Advanced skiers in the mood for something special should head up to the Aiguille Rouge for the exhilarating 2km descent to Villaroger. Alternatively above Arc 1600 there's also a snow park ripe for hours of freestyle fun.

- ✓ FAMILIES
- ✓ ALL ABILITIES
- ✓ GLACIER SKIING

## RESORT HEIGHT:

1,600m-2,000m

## SNOW RANGE:

1609-3226m

## SKI AREA:

Paradiski 425km

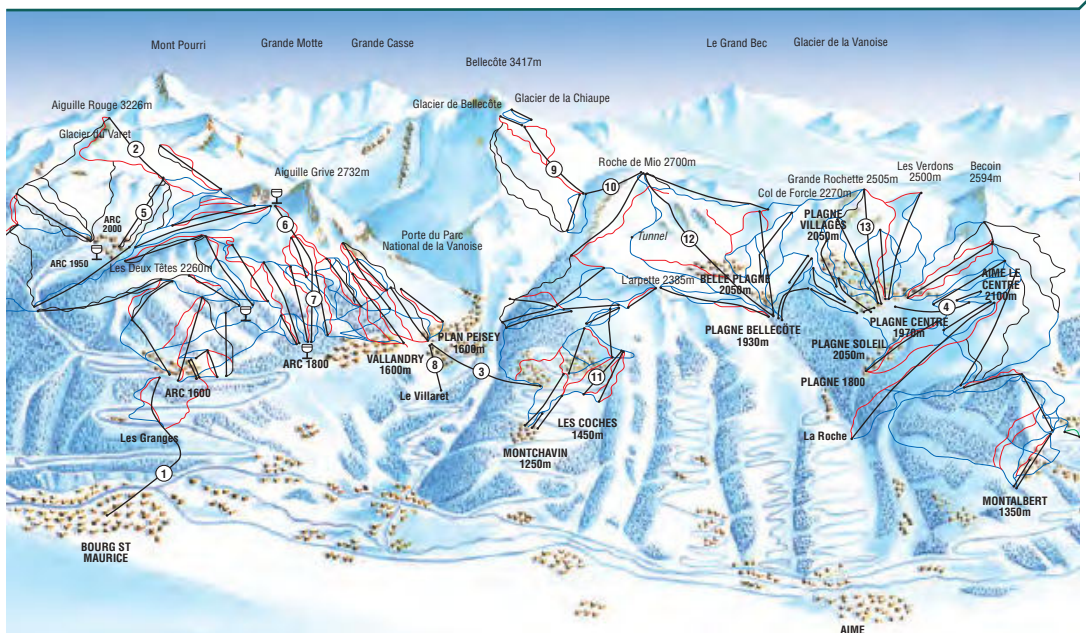
## PISTES:

Paradiski	Runs
● Easy	140
● Intermediate	65
● Difficult	37

## LIFTS: 141

51 Les Arcs - 1 funicular  
9 cable cars | 62 chairlifts  
58 drag lifts

## SNOW PARKS: 2







### THE BEST BITS

- Access to the 425km Paradiski area.
- Mix of high altitude and tree-lined skiing.
- Large terrain park good for all abilities.

### THINGS TO CONSIDER

- Hard for beginners to get to La Plagne.
- Transport can be limited in the evening.

### WHERE TO STAY

Go online for all our places to stay

MORE ACCOMMODATION INFO ON THE NEXT PAGE



[crystalski.co.uk/r/lesarcs](http://crystalski.co.uk/r/lesarcs)



### FLY FROM

Gatwick | Stansted | Birmingham | Bristol  
 | Cardiff | Edinburgh | East Midlands | Exeter  
 | Glasgow | Leeds/Bradford | Manchester | Newcastle | Liverpool  
 | Belfast | Southampton | Bournemouth | Isle of Man



### TRANSFER TIME

Chambery - 2 hours 30 minutes  
 Geneva and Lyon - 3 hours 30 minutes  
 Ski Train (Bourg St. Maurice) - Arc 1600 20 minutes,  
 Arc 1800 25 minutes, Arc 1950 50 minutes,  
 Arc 2000 60 minutes



### TIPS FROM OUR LOCAL TEAM

A new addition to the Les Arcs ski resort is the Mille 8 area - head to Arc 1800 to experience special effect pistes (lights and music included), an 800m luge run, magnificent views and a particularly enormous xylophone.



### CHILDCARE AVAILABLE HERE

See our family skiing tips on p16

### ACTIVITIES

bowling alley | cinema  
 | helicopter rides  
 | outdoor ice skating in Arc 2000

### SNOW ACTIVITIES

snowmobiling | toboggan run  
 | snow shoeing | igloo village  
 | parapenting

### TYPICAL PRICES

Cup of coffee from €2.00  
 Small beer from €3.00  
 Bottle of house wine from €15.00

6 DAYS (GUIDE PRICES)	ADULT	CHILD	SENIOR
LOCAL LIFT PASS FROM	£206	£162	£162
SKI HIRE FROM	£55	£30	£55
BOARD HIRE FROM	£75	£40	£75
BOOT HIRE FROM	£40	£22	£40
TUITION FROM	£130	£130	£130
FIRST TIME PACK FROM	£149	£139	-
LIFT PASS BUNDLE FROM	£222	-	-

FOR LIFT PASSES, KIT HIRE, LESSONS, BUNDLES AND DISCOUNTS - GO ONLINE FOR ALL THE LATEST PRICES.

Prices are based on the lowest as at time of publication. For age definitions go online.

### YOU MIGHT ALSO LIKE

#### LA PLAGNE P46

Experience the other side of the Paradiski and take in the sunny skiing over in Champagny

#### WENGEN P84

Smaller and more traditional resort part of the Jungfrau ski area with 213km of piste



## WHY NOT STAY AT...

For more places to stay in Les Arcs, go to [crystalski.co.uk/r/lesarcs](http://crystalski.co.uk/r/lesarcs)**LA CACHETTE, ARC 1600**

3.5\* HOTEL | HALF BOARD

**DISTANCE TO LIFT - 1 MINUTE'S WALK**Piste side location | Range of family facilities  
Panoramic restaurant | Free WiFi in receptionOFF PEAK PRICES  
**FROM £775PP\*****L'AIGUILLE ROUGE, ARC 2000**

3\* HOTEL | HALF BOARD

**DISTANCE TO LIFT - SKI TO DOOR**Close to resort centre | Daily entertainment programme  
Recommended childcareOFF PEAK PRICES  
**FROM £589PP\*****MONIQUE, ARC 2000**

3.5\* CHALET | CATERED | SLEEPS 14

**DISTANCE TO LIFT - SKI-IN, SKI-OUT**Close to resort centre | Indoor pool  
Sauna & fitness room | Free WiFiOFF PEAK PRICES  
**FROM £685PP\****Our finest***EDEN ARC, ARC 1800**

4\* APARTMENTS | SELF CATERING

**DISTANCE TO LIFT - SKI TO DOOR**High quality apartments | Indoor pool  
Whirlpool, sauna & steam room | Excellent viewsOFF PEAK PRICES  
**FROM £495PP\*****DU GOLF, ARC 1800**

4\* HOTEL | HALF BOARD

**DISTANCE TO LIFT - SKI TO DOOR**Roof terrace | Indoor relaxation pool  
Wellness spa facilities | Free WiFiOFF PEAK PRICES  
**FROM £719PP\****Our finest***LE ROC BELLE FACE, ARC 1600**

4\* APARTMENTS | SELF CATERING

**DISTANCE TO LIFT - 5 MINUTES' WALK**High quality modern apartments | Indoor pool, sauna & steam room  
Private nanny service | Free WiFiOFF PEAK PRICES  
**FROM £439PP\***

\* Prices are a guide only and can go up and down - check at the time of booking for the most up to date prices and availability. Prices are in £s per adult, based on maximum room occupancy for 7 night departures from London Gatwick on 09/01/2016 and include flights, transfers and accommodation. Holiday supplements and under occupancy charges may apply. For full terms and conditions and up to date prices visit [crystalski.co.uk](http://crystalski.co.uk)

**SKI PLUS – THE EASIEST WAY TO HIT THE SLOPES**

Lift pass and equipment hire or carriage included

Ski Plus rolls everything you'll need into one great value package – flights, transfers, accommodation, lift pass, and ski or board hire or carriage. Best of all, you'll likely pay less for these than you would if you were to book them separately.

For all our Ski Plus holidays, check out [crystalski.co.uk](http://crystalski.co.uk)





Our finest

## ARC 1950 LE VILLAGE

4.5\* APARTMENTS | SELF CATERING

DISTANCE TO LIFT - 2 MINUTES' WALK

Stunning luxury residence | Indoor/outdoor pool | Large spa and wellness | Meal upgrades available

OFF PEAK PRICES  
FROM £525PP\*

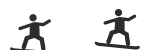
TripAdvisor traveller rating  
Based on 478 reviews

"Luxury apartments with doorstep skiing in the fairytale-like Arc 1950"

A distinctive and attractive apartment complex, Arc 1950 Le Village is guaranteed to make your ski break memorable. These ski-in/ski-out apartments clustered around a pedestrianised centre have a chocolate box beauty to the outside, with traditional shuttered windows and pastel painted buildings, to match the great service, facilities and well-designed interiors on the inside.

From walking into the grand but homely entrance hall 50 yards from the foot of the nearest lift to Arc 2000, what's noticeable is the open, family atmosphere – complete with gently-crackling fire in the middle of the hall. Le Village offers a luxury ski experience, in one of France's most picturesque resorts.

All guests also have the use of a range of excellent leisure facilities as well as access to the new Deep Nature spa facility. A premium breakfast in Le 1950 restaurant and half-board catering are now also available at a supplement to self-caterers - your evening meals can also be taken in Hemingway as well as Le 1950.



# THIS IS JUST THE START

This guide is your key to the mountain. Have a flick through and get some inspiration about where to go and what to do. Then tap into even more info by visiting our site, giving us a call, chatting to us on social sites, or seeing us face to face in-store.

**We're ski holiday specialists and we'll help you find the best ski holiday for you. Here's how.**



[crystalski.co.uk](http://crystalski.co.uk)

Full details about each resort - find the best deals, see what offers you can take advantage of, plus get more ideas on where to go.



020 8234 6400

Give us a ring to speak to one of our holiday specialists - they'll talk you through your options and give you some recommendations.



SOCIAL

Join the conversation and see what's happening on the mountain. Ask us anything or just chat with other skiers. You can also read in-depth ski articles on our Ski Buzz blog.



CRYSTAL SKI EXPLORER

Our free iPhone and Android app helps you get the most out of the mountain. Plan your holiday with the resort guide, and get recommended ski routes, snow reports, a GPS tracker, piste maps and more.



IN-STORE

Come and speak to us face to face in one of our locations in the indoor snow centres in Braehead (Glasgow), Castleford, Hemel Hempstead, Manchester, Milton Keynes and Tamworth. We'll happily talk you through your options and answer any questions you've got.

